

# KlearVue™

ADA-COMPLIANT LIFT



## VISIBILITY PLUS

The **NEW** KlearVue is the most **unique** ADA-compliant lift on the market today. Based on Ricon's proven, time-tested S-Series technology, the KlearVue provides an **unobstructed view** from within the vehicle. Outside, KlearVue is virtually unseen because of the unique folding platform design. Drivers appreciate the added safety benefit of minimized "blind spots," passengers appreciate the unobstructed view KlearVue provides.



**UNSEEN FROM THE OUTSIDE MEANS  
A CLEAR VIEW FROM THE INSIDE**

## MORE KLEARVUE ADVANTAGES

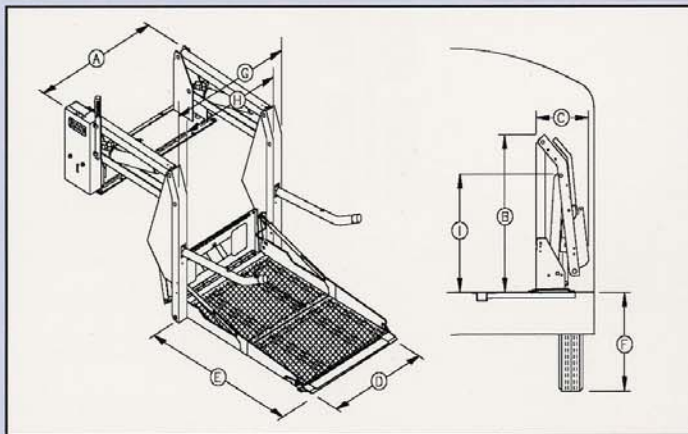
**The KlearVue is quiet.** Once again, KlearVue's unique design provides a **more stable and compact arrangement when stowed.** The result? Excessive noise during transit is greatly reduced. Now add the benefit of Ricon's **patented, Sto-Loc™** feature — which secures the lift from accidental deployment.

Like other Ricon transit and paratransit lifts, the KlearVue employs the patented Ricon electronic **Interlocking Occupant Safety Belt** — designed to be a simple and effective way to protect your passengers and your safety record. Because we believe safety and convenience are so important, we include the Safety Belt on every light transit lift we manufacture. Because the belt is electronically interlocked, the lift cannot be operated until the belt is engaged, ensuring that this safety feature is available every time. **Ricon is the only lift manufacturer to offer the interlocking belt as standard equipment.**

**The KlearVue protects your passengers.** The KlearVue inboard rollstop prevents your passengers from inadvertently rolling towards the vehicle. The outboard mechanical rollstop operates even if the vehicle is as much as four feet from the curb. And, as an additional safety, **when stowed, the outboard rollstop is away from passenger exposure.** The KlearVue also comes with easy-to-grab standee handrails for additional safety and ADA compliance.

**The KlearVue is easy to operate and maintain.** It comes standard with stainless steel fittings and lubrication-free bearings. And, the KlearVue comes with a **5-Year Limited Warranty.** Additional extended warranty is also available.

## KLEARVUE SCHEMATIC



## KLEARVUE DIMENSIONS

	MODELS		
	K2003	K2005	K2005-ADA
A. Stationary frame width	47"	49"	49"
B. Height (posts)	47"	47"	55"
C. Installation depth (folded)	15.5"	15.5"	15.5"
D. Usable platform width	30"	32"	32"
E. Usable platform length	51"	51"	51"
F. Floor-to-ground travel	37"	37"	37"
G. Traveling frame width	37.5"	39.5"	39.5"
H. Clear entry width	29.4"	31.4"	31.4"
I. Platform height (folded)	30.5"	30.5"	30.5"

## KLEARVUE SPECIFICATIONS

Power	Electro-hydraulic motor
Pump rating - 12 volts DC	65 amp. Avg./cycle, 1250 psi
Pump rating - 24 volts DC	32.5 amp. Avg./cycle, 1250 psi
Hydraulic cylinders	2, 1.5" power-up/gravity down
Rated load capacity	800 lbs.
Manual back-up (up)	Manual hand pump
Manual back-up (down)	Manual pressure release valve
Weight range	310-325 lbs.

